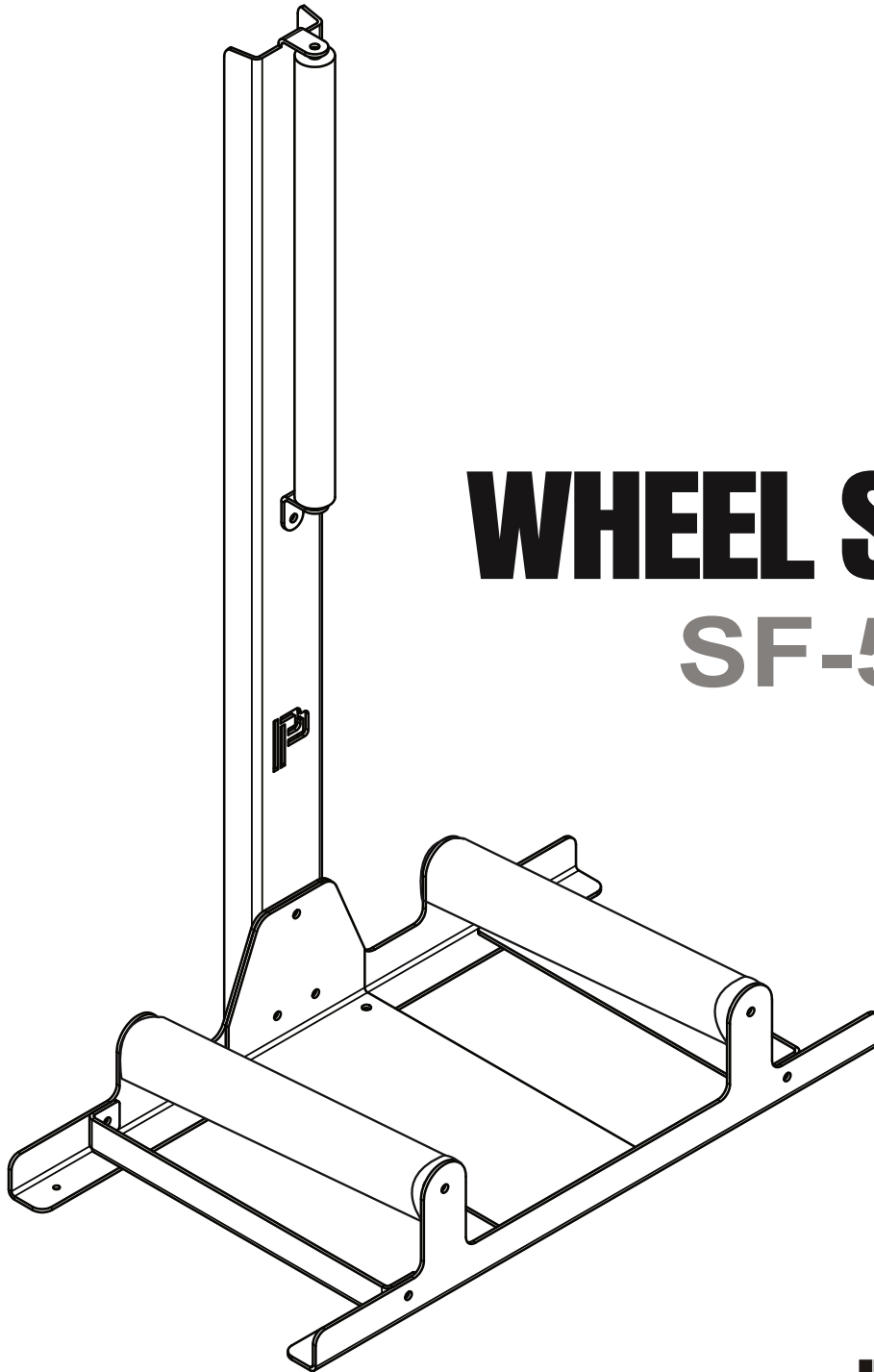


MANUAL AND PART LIST

© 2021 Poka Premium Equipment All Rights Reserved

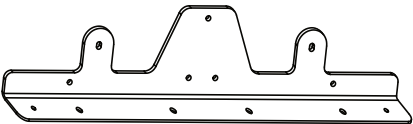


WHEEL STAND SF-5 PRO

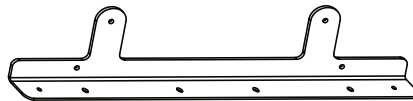
ASSEMBLY PARTS LIST



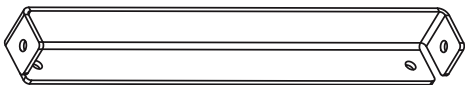
BRACKET (E) x1



STAND BASE (A) x1



STAND BASE (A) x1



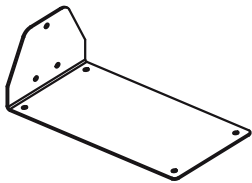
STRENGTHENING BASE (B) x2



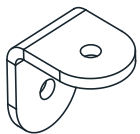
UPPER ROLLER - LONG (D) x1



BASE ROLLER - SHORT (C) x2



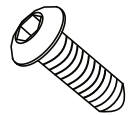
BASE CONNECTOR (G) x1



UPPER ROLLER MOUNT (F) x1



RUBBER FEET (L) x 4



SCREW M6x20 (G) x6



NUT BOLD M6 (J) x16



NUT BOLD M4 (K) x4

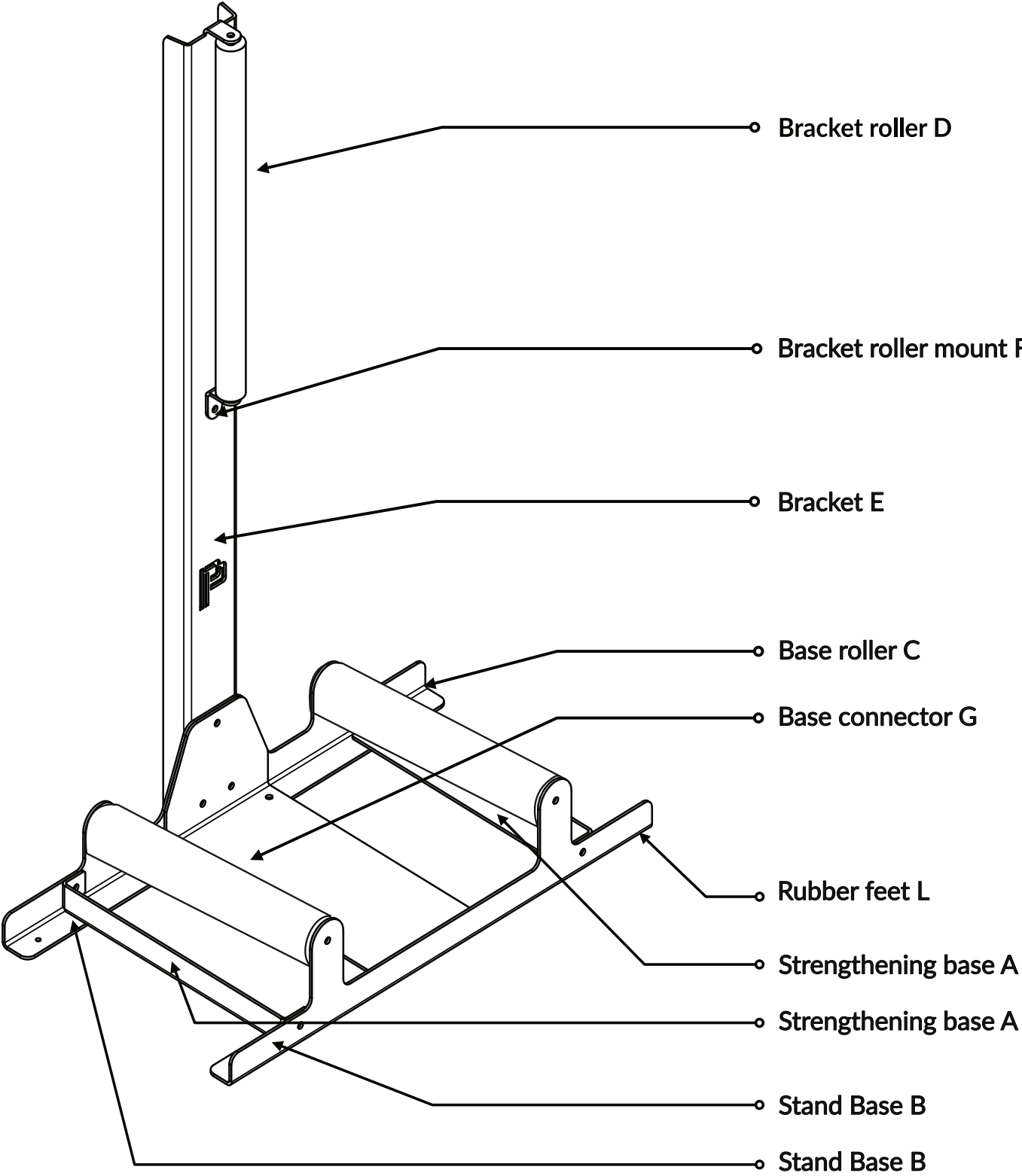


SCREW M6x16 (H) x16

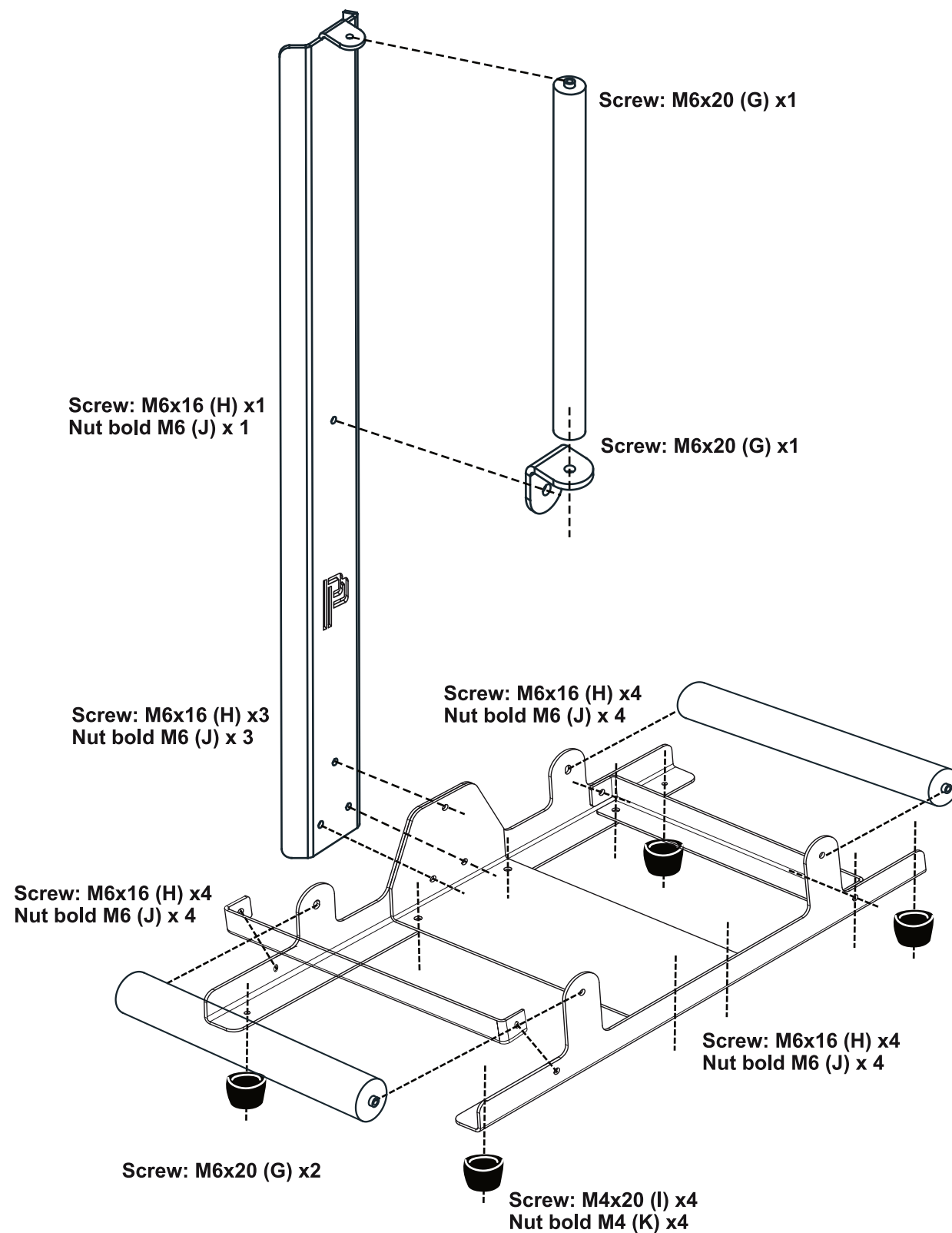


SCREW M4x20 (I) x4

DRAWING SECTION



ASSEMBLY VIEW



IMPORTANT INFORMATION

CAUTION:

The protective coat is resistant to moderate watering. Please keep in mind that if the protective layer is damaged, the steel may corrode. Therefore, we do not recommend filling the stand with water abundantly and after each possible flooding, it should be thoroughly dried. The wheel stand is made from steel. The manufacturer is not responsible for damage to the rims by a misused wheel stand. We are not responsible for damage to the PVC rolls during too high load.

Thank you for purchase our product.

"Note: all screws are of high quality, however, when assembling, we suggest using an manual allen key or automatic screwdriver, but at very low speed, so as not to break the screws."



ORGANIZE YOUR PERFECTION

www.pokapremium.pl

www.facebook.com/pokapremiumequipment

© 2021 Poka Premium Equipment All Rights Reserved